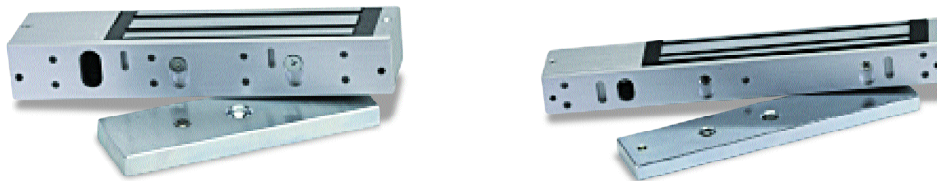


Magnetic Locks

For PCSC Systems

PCSC
PERIPHERALS



Electro-magnetic locks (maglocks) are increasingly being used in the access control and security industries. Application areas include airports, hospitals, office buildings, and mass transit stations. They are also being used on doors where access is restricted for security reasons or where doors double as an emergency exit.

PCSC provides a variety of high-quality maglocks for the use in any installation. We offer three different models of maglocks with a range of holding force of 600 lbs. to 1200 lbs. for use in a variety of environments. Also offered is a dual 1200 lb. maglock for more sensitive environments. They are designed for dependability and ease of installation. Each maglock allows concern-free use in any access control environment.

Features

- Surface mounted
- Dry contact sensor for door condition indication (can be hooked up to a indication light or buzzer)
- Functions on DC current for quiet operation
- 12 volt or 24 volt option
- Optional Flush mounted
- Easy to install
- Low current draw
- Internally mounted solenoid
- CE approved
- US and European versions available
- One year limited warranty
- Full concealment design
- Works with all access control systems
- Heavy duty design
- Works with either mortise or cylindrical locksets
- 600 lb. Magnetic Lock
- 1200 lb. Magnetic Lock
- Dual 1200 lb. Magnetic Lock

Our Promise To You

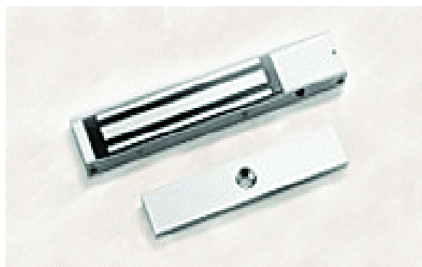
All PCSC products are backed by our commitment for complete customer satisfaction, rapid response to your concerns and technology leadership. The product you purchase today will have the capabilities to evolve as your requirements change.

LOGICAL
INTELLIGENT
NETWORK
CONTROLLERS

PCSC

1pcsc.com

Magnetic Locks



ML600DS

Dimensions: L- 9.8in (250mm)
W- 1.7in (42mm)
D- 1.0in (26mm)

Armature Plate: L- 7.3in (185mm)
W- 1.5in (38mm)
T- 0.5in (12.5mm)

Voltage: 12 / 24V DC

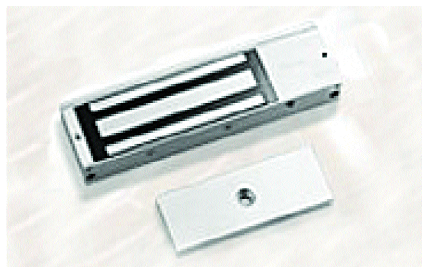
Current: 500mA/12V DC
250mA/24V DC

Holding Force: 600lbs. (272 kg)

Built-in Voltage Spike Suppressor

CE Approved

UL Approved



ML1200DS

Dimensions : L- 10.5in (266mm)
W- 2.9in (73mm)
D- 1.6in (40mm)

Armature Plate: L- 7.3in (185mm)
W- 2.4in (61mm)
T- 0.6in (16mm)

Voltage : 12 / 24V DC

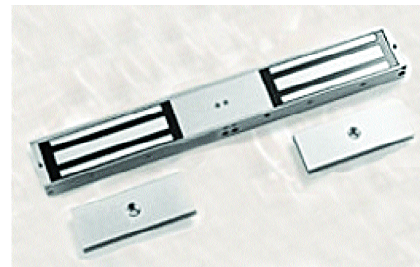
Current : 500mA/12V DC
250mA/24V DC

Holding Force: 1200lbs (544 kg)

Built-in Voltage Spike Suppressor

CE Approved

UL Approved



MLD1200DS

Dimensions : L- 20.9in (532mm)
W- 2.9in (73mm)
D- 1.6in (40mm)

Armature Plate: L- 7.3in (185mm)
W- 2.4in (61mm)
T- 0.6in (16mm)

Voltage : 12 / 24V DC

Current : 500mA/12V DC
250mA/24V DC

Holding Force: 1200lbs. (544 kg)

Built-in Voltage Spike Suppressor

CE Approved

UL Approved

Accessories

MLBRKT0001	Armature Plate Housing for 1,200 lbs.
MLBRKT0011	Armature Plate Housing for 600 lbs.
MLBRKT0101	Adjustable Bracket for 1,200 lbs.
MLBRKT0102	L & Z Bracket for 1,200 lbs.
MLBRKT0103	Angle Bracket for 600 lbs.
MLBRKT0104	Filler Plate 10.5x0.7x0.6" (266x19x16 mm)
MLBRKT0105	Filler Plate 10.5x0.7x0.5" (266x19x12.5 mm)
MLBRKT01011	Adjustable Bracket for 600 lbs.
MLBRKT01012	L & Z Bracket for 600 lbs.