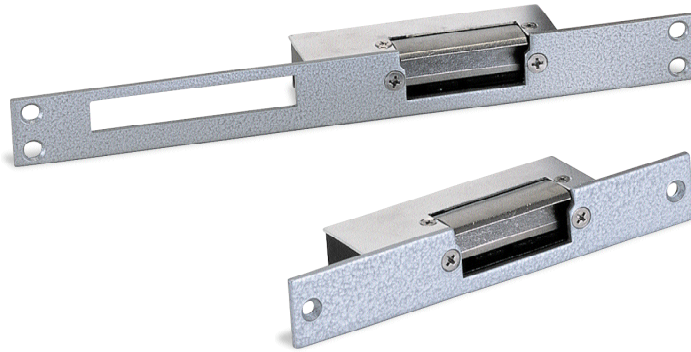


Electric Strikes

A select offering of electric strike products for access control

PCSC
PERIPHERALS



Electric strikes provide remote release of a locked door. They allow the door to be opened without retracting the latchbolt. This occurs by the release of the electric strike lip (sometimes called a keeper or gate). When the door closes the beveled latchbolt rides over the lip and falls into the strike pocket. A door can be set either as Fail Safe (loss of electrical power opens the door) or Fail Secure (loss of electrical power locks the door).

PCSC provides a variety of high-quality strikes for the use in any installation. PCSC offers three different models of strikes in a variety of sizes and alloys, for the use in variety environments. Though each strike is by default sold as 12VDC in Fail Secure format, each strike has the option of being ordered in Fail Safe format and/or in 24VDC format. The ES125 strike may also be ordered in Stainless Steel option. Designed for dependability and ease of installation, each strike allows concernfree use in any access control environment.

Features

- Options available for fail-safe (upon power failure, lock opens great for stairwells and wherever emergency egress is a concern) or fail-secure (upon power failure, lock remains engaged). Our locks come standard as fail-secure with fail-safe optional.
- Stainless steel option for ES125.
- Flush mounted.
- Dry contact sensor for door condition indication (can be hooked up to a indication light or buzzer).
- Functions on DC current for quiet operation.
- 12 volt or 24 volt option.
- Easy to install.
- Low current draw
- Internally mounted solenoid
- CE approved.
- US and European versions available.
- One year limited warranty.
- Full concealment design
- Works with all access control systems.
- Heavy duty design.
- Works with either mortise or cylindrical locksets.

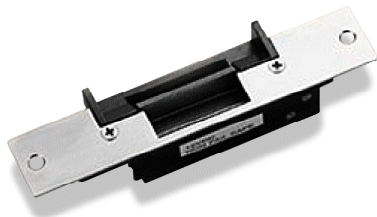
Our Promise To You

All PCSC products are backed by our commitment for complete customer satisfaction, rapid response to your concerns and technology leadership. The product you purchase today will have the capabilities to evolve as your requirements change.

LOGICAL
INTELLIGENT
NETWORK
CONTROLLERS

PCSC

Electric Strikes



ES125

DIMENSIONS:
 Length 4.9" (125mm)
 Width 1.7" (44mm)
 Depth 1.5" (38mm)

VOLTAGE:
 12V

MODES:
 Fail Secure

CURRENT:
 400mA / 12VDC

FACE PLATE:
 Aluminum Length 4.9" (125mm)

OPTIONS:
 SAF – Fail Safe
 24 – 24VDC
 SS – Stainless Steel
 CE Approved



ES160

DIMENSIONS:
 Length 6.3" (160mm)
 Width 1.0" (25mm)
 Depth 1.2" (31mm)

VOLTAGE:
 12V

MODES:
 Fail Secure

CURRENT:
 400mA / 12VDC

FACE PLATE:
 Steel (painted), Length 4.9" (125mm)

OPTIONS:
 SAF- Fail Safe
 24- 24VDC
 CE Approved



ES250

DIMENSIONS:
 Length 9.8" (250mm)
 Width 1.0" (25mm)
 Depth 1.2" (31mm)

VOLTAGE:
 12V

MODES:
 Fail Secure

CURRENT:
 400mA / 12VDC

FACE PLATES:
 Steel (painted), Length 9.8" (250mm)

OPTIONS:
 SAF- Fail Safe
 24- 24VDC
 CE Approved